

MINI CHAIN HOIST

STANDARD FEATURES

- ▷ Compact and lightweight body
- ▷ Toku rotary vane motor
- ▷ Robust epicycle gearbox
- ▷ Failsafe automatic internal disc brake
- ▷ Mechanical upper & lower switches
- ▷ Aluminium housing
- ▷ Internal silencing down to 80 dB(A)
- ▷ Alloy safety swivel hooks with safety catch
- ▷ Load chain 4 x 12mm of European manufacture to EN818-7

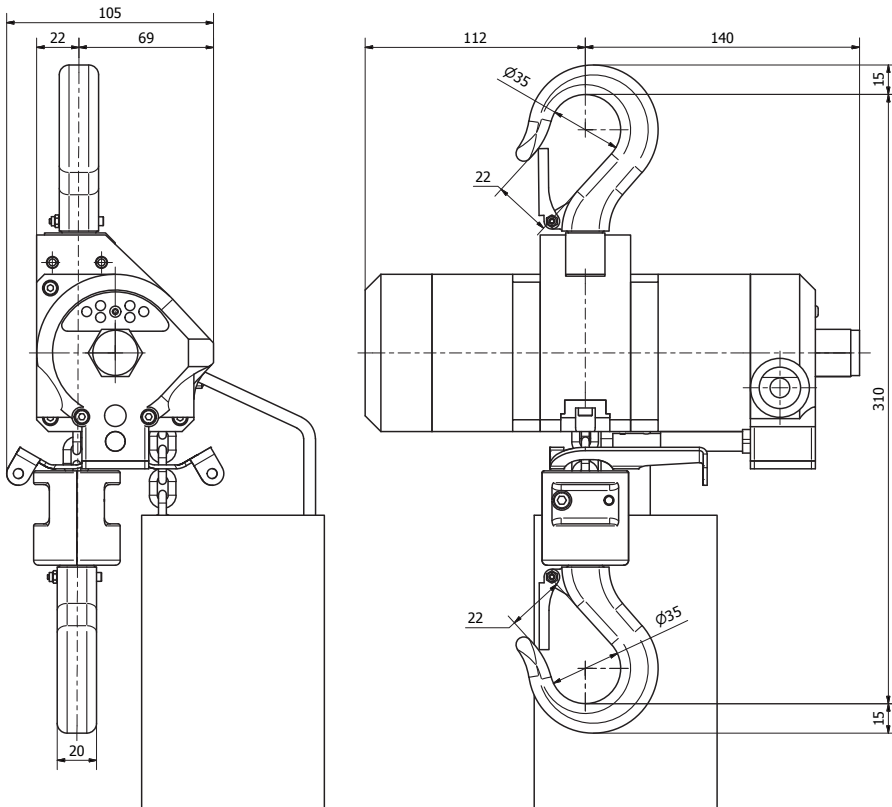
AVAILABLE OPTIONS

- ▷ Marine specification
- ▷ Special paint systems
- ▷ Corrosion protection
- ▷ ATEX specification
- ▷ Chain collectors (PVC, galvanised or stainless steel)
- ▷ Air Service units
- ▷ Festoon systems
- ▷ Radio control
- ▷ Main air shut off valve

| MODEL | WLL | LIFTING SPEED WITH LOAD | LIFTING SPEED WITHOUT LOAD | LOWERING SPEED WITH LOAD |
|---------|-------------------------|--------------------------|----------------------------|---------------------------------|
| TCR-250 | 250 kg | 9.3 m/min | 19.0 m/min | 17.9 m/min |
| | AIR CONSUMPTION LIFTING | AIR CONSUMPTION LOWERING | AIR CONNECTION | MINIMUM HOSE DIA. |
| TCR-250 | 13 l/sec | 15 l/sec | 1/2" BSP | 1/2" HOSE |
| | CHAIN FALLS | WORKING PRESSURE | WEIGHT WITH 3M HOL | WEIGHT PER ADDITIONAL METRE HOL |
| TCR-250 | 1 | 6 bar | 7.0 kg | 0.35 kg |

C = CORD CONTROL

DPE = PENDANT



All measurements are in mm
Information subject to change without notice

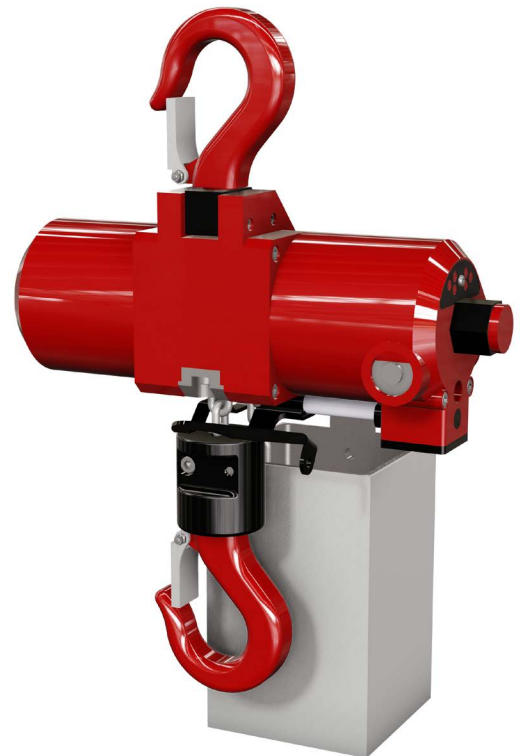


Image for illustration purposes only

TCR-250